



# Jazler RadioStar 2

---

User Manual

Clocks

Contents

1

Summary.....

3

2

Creating a Clock.....

3

3

Assign the clock to time slot.....

8

4

Force Clocks.....

10

## 1 Summary

Jazler needs a plan in order to play music depending on your needs. In order to achieve that, you have to give some instructions on which category you want to play, either there are songs or jingles, sweepers, spots etc. You set a roadmap of categories and then assign it in a timeslot to have it repeated continuously. This roadmap is the Clock.

## 2 Creating a Clock

Let's create a clock with pop, rock and a jingle among them. First we are going to Scheduling → Auto Program Scheduler in the Control Panel.

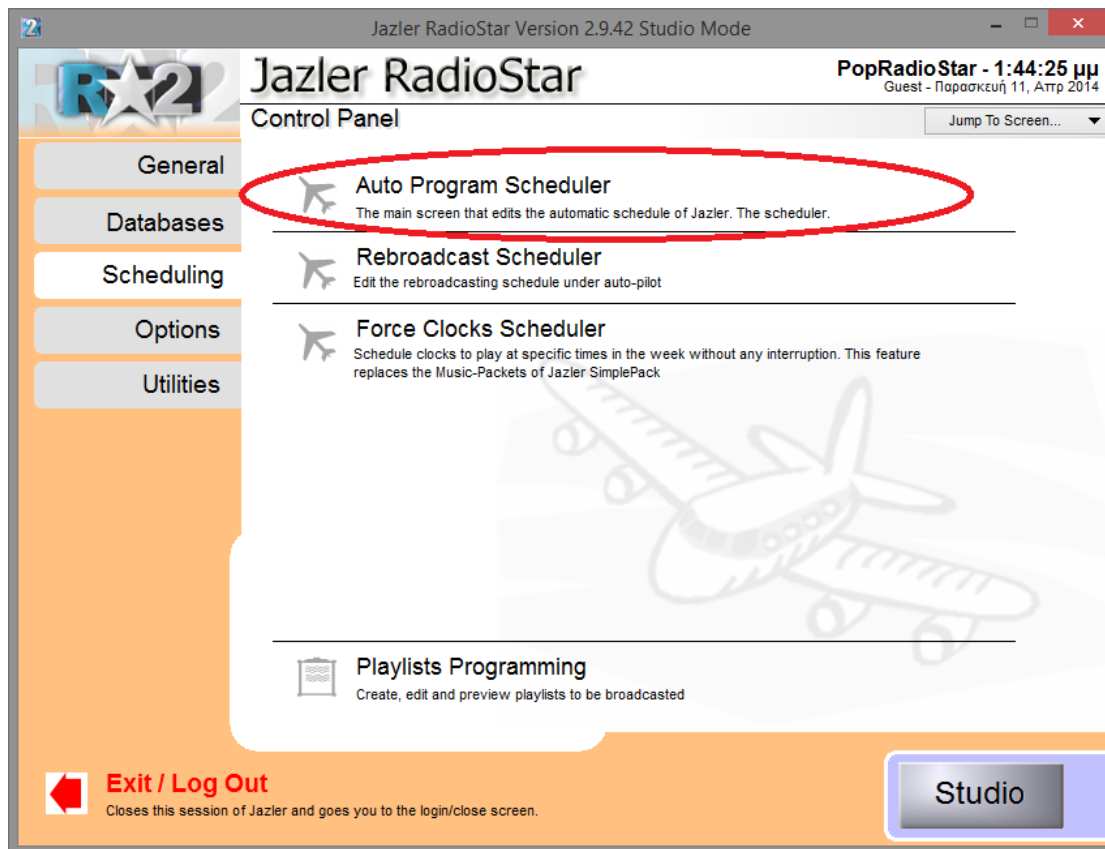


Figure 2-1

As we see below this is the main screen. On the main screen we have some options about the time slots for a specific day and the current clocks assigned in the time slots. (Later, we will see more). On the left, there is the list of available clocks. There are 4 available clocks. By pressing “**Add**” on the left, below the Clocks list, we are being lead to another screen.

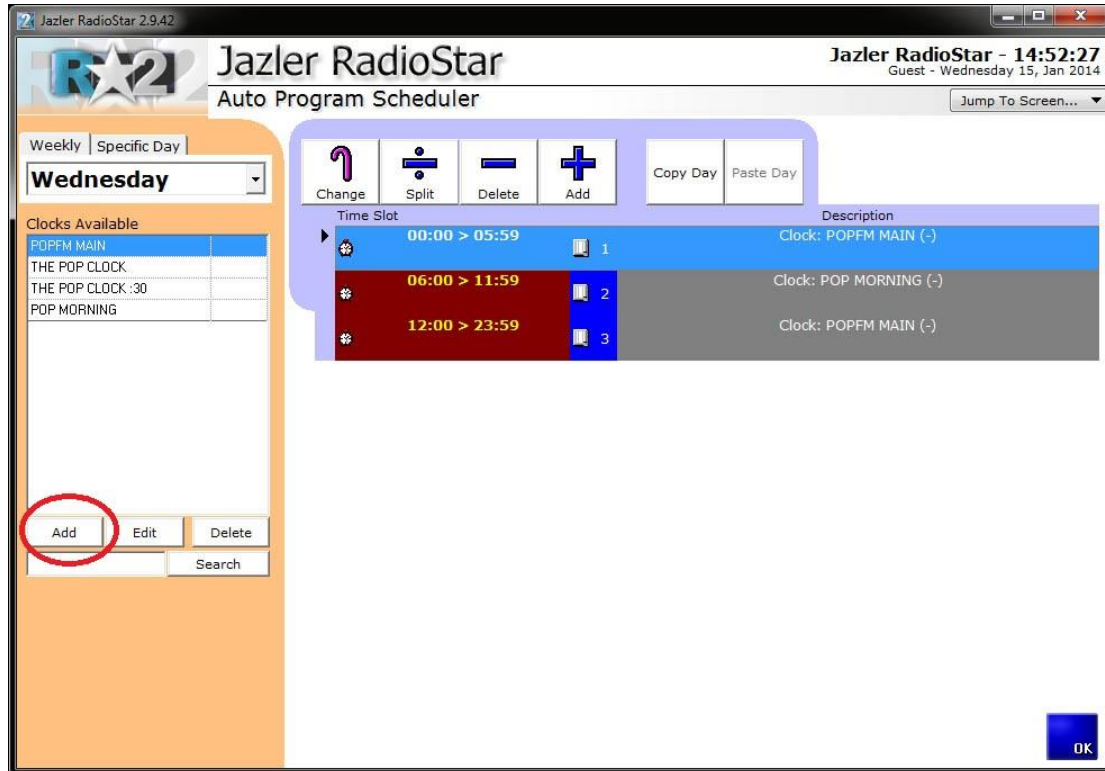


Figure 2-2

Then, we assign a name to the clock (**Pop Rock**).

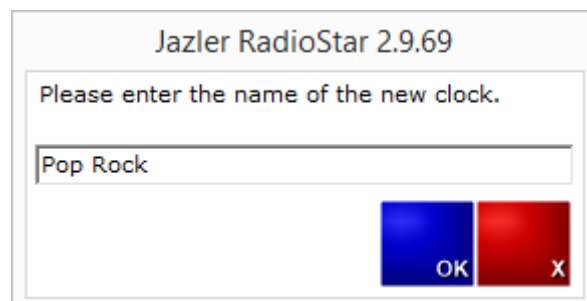


Figure 2-3

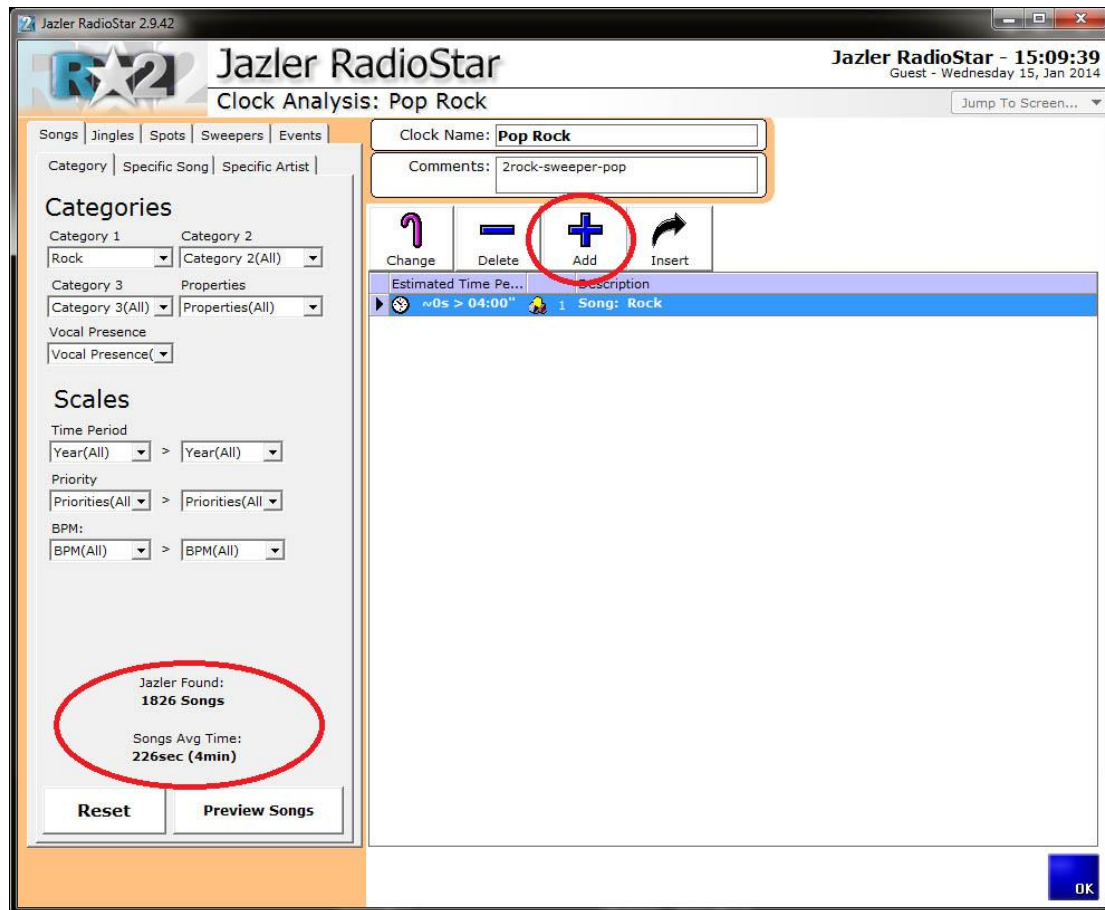


Figure 2-4

On the top, we can add some description in the comments area. Here we create a rotation pattern. We decided that the pattern we would like to play is rock-rock-pop-rock-pop-pop-rock-rock-pop-rock. In order to do so, we choose the tab songs and the category rock and press “**Add**”. The newly added row will be placed at the end of the list. Then, we add another rock one and we continue by changing the category to pop and pressing add again. From now on, we follow the pattern we decided, and create the clock.

Also, each time we change the filters, Jazler will inform us how many songs there are and their average time.

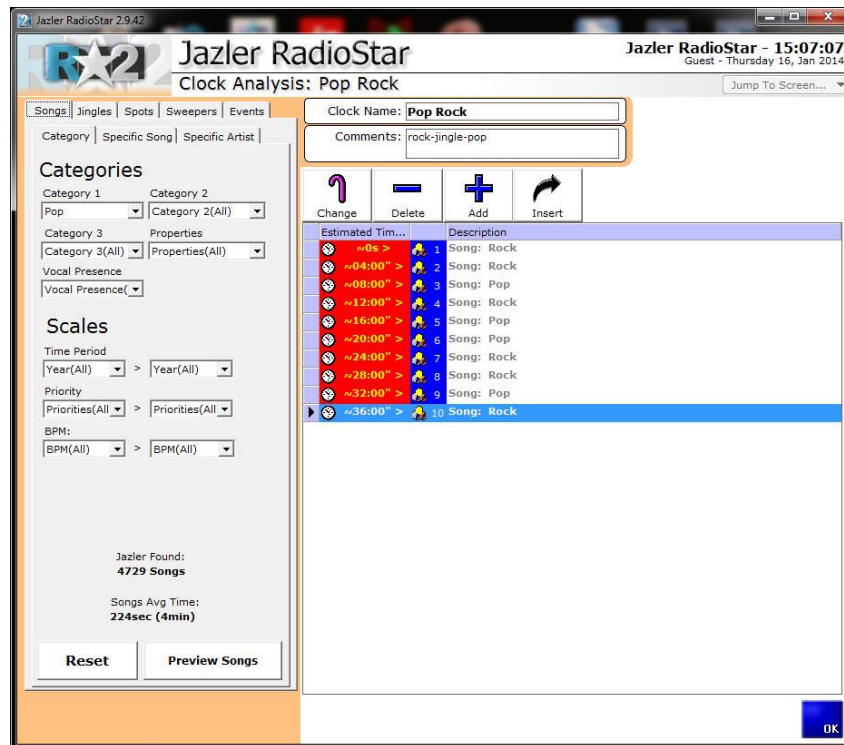


Figure 2-5

The clock is configured, as we can see above, the pattern that we decided is formed. Jazler shows approximately the clock's duration and when will play each song. Now it's time to add some jingles among songs to have a nice transition between them. We will choose to add random jingles based in 2 categories, VOCAL SHOTGUNS and POWER TRANSITION.

In order to place the jingles between the songs we have to select the tab jingles and the desired category of jingles, highlight the song that we want the jingle to play before, and then press **“Insert”**. This way, the newly added jingle will be inserted right before the selected song.

As we can see below, the clock is ready! Jazler will choose to play a random Rock song followed by another one and after that a Pop and so on. After each song, there will be a random jingle selection based on their category. There are 20 audio files (10 of them are songs and the others are jingles) and the duration of this clock is approximately 40 minutes. This means, that every 40 minutes Jazler will repeat the clock.

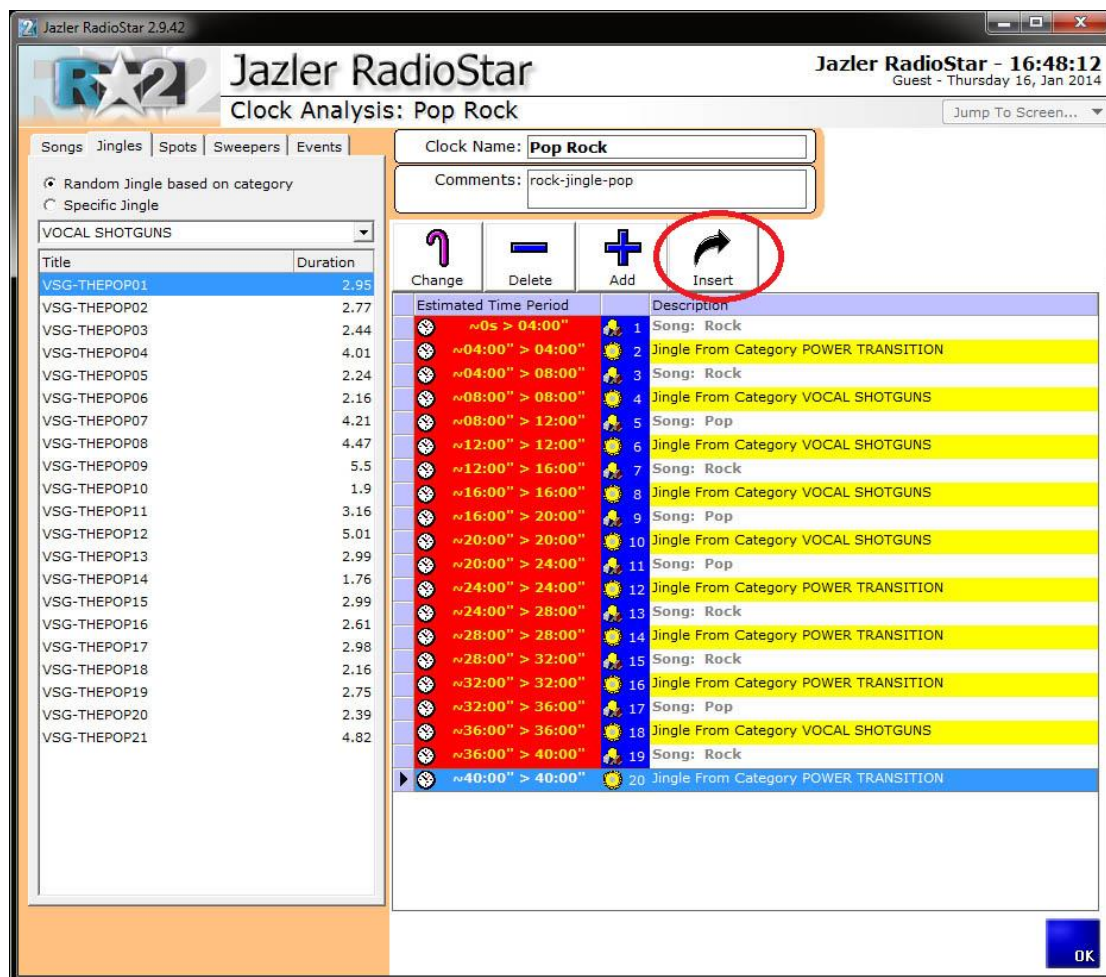


Figure 2-6

### 3 Assign the clock to time slot

Now, we are ready to assign the clock to the time slots we want. At first, select the desired clock and then press “**Add**” on the main Auto Program Scheduler, (Figure 3-2) then Jazler will pop up a new window, where we set start and end time (Figure 3-1). There are also several buttons to set easily predefined durations.

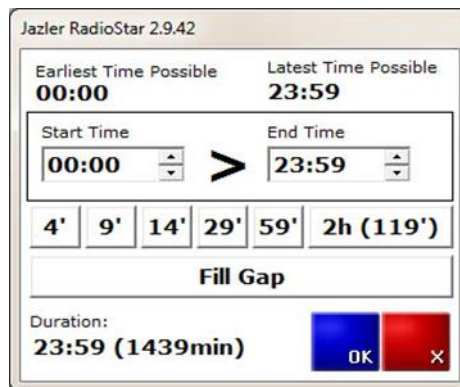


Figure 3-1

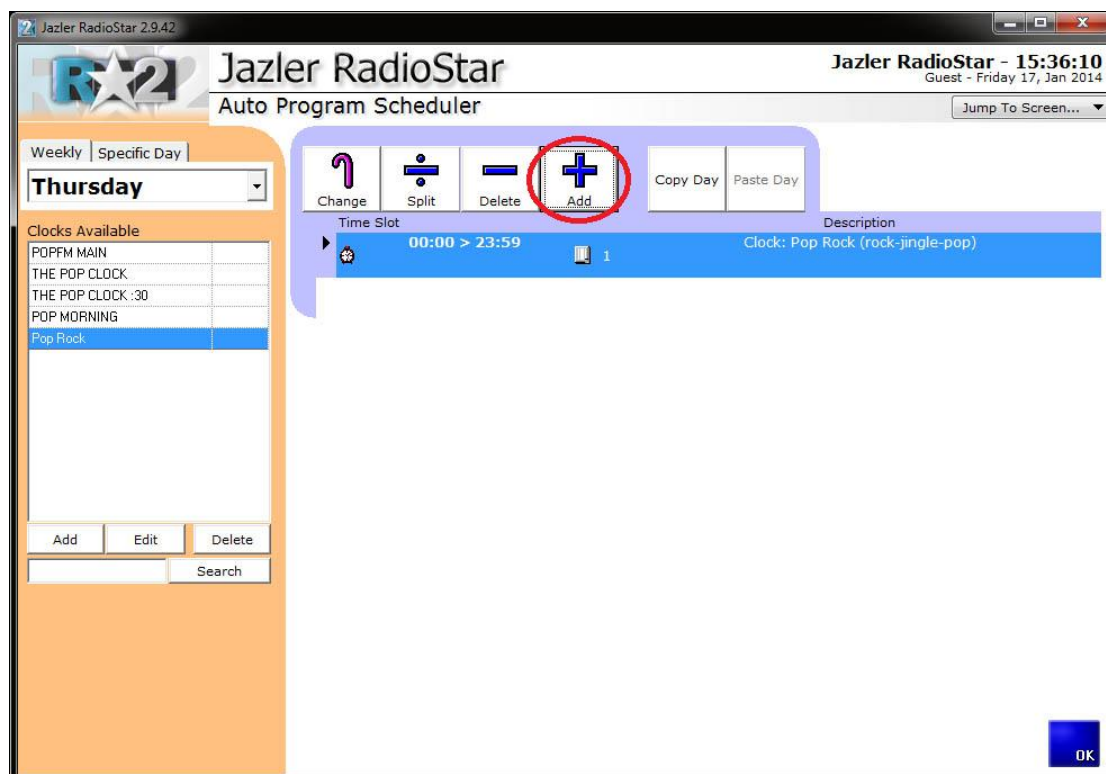


Figure 3-2

As we see above, we have programmed for all the whole day to play this specific clock. Let’s add both POPFM MAIN and POP MORNING.



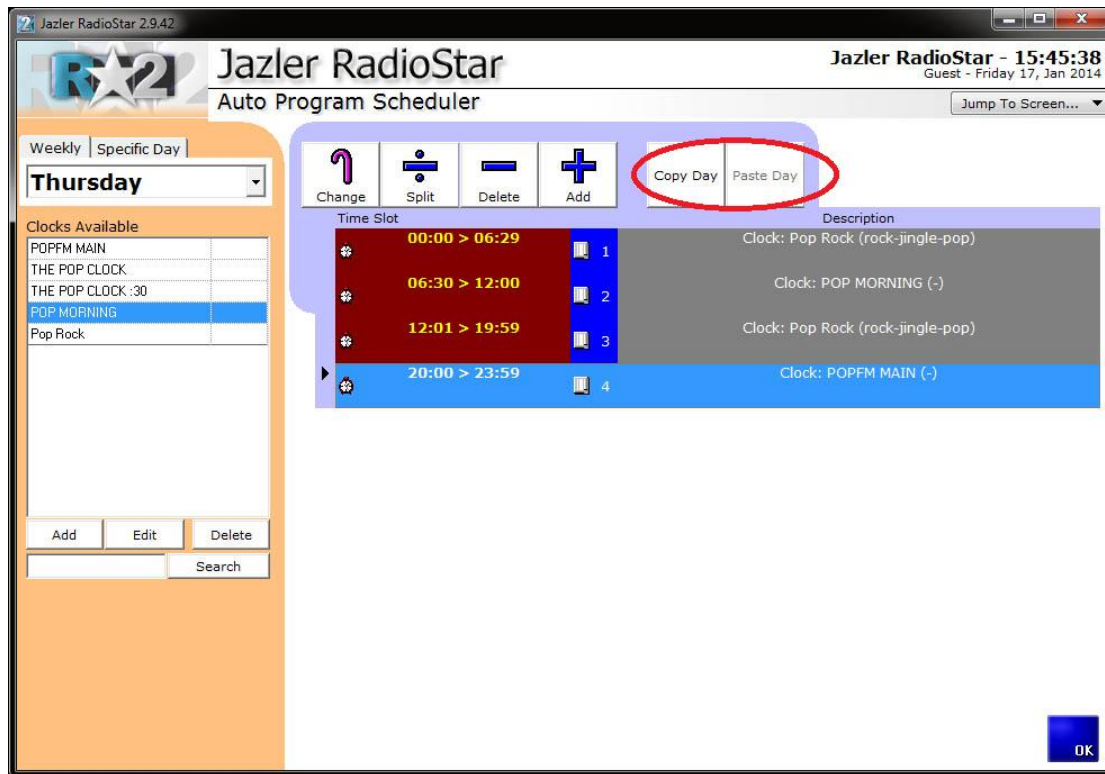


Figure 3-3

The above figure shows the final auto program for the specific day (Thursday). Essentially at 00:00 and for 6:30 hours Jazler will play continuously the pattern we have described in the clock Pop Rock. After that and for 5:30 hours will keep playing the corresponding POP MORNING pattern and so on.

If we want to copy the whole day to another then we must press “**Copy Day**” and then select the desired day and press “**Paste Day**”.

**Important!!!**

*When changing the pattern of a clock the effects will also take place at all time slots that this clock is applied to!!! For example, if you edit a clock and add one more jingle and a song in order for it to be applied to a specific time slot, then ALL the other time slots that use this clock will be modified too!*

## 4 Force Clocks

You can schedule clocks to play at specific times in the week. Let's create a pop clock with the same way as seen on chapter 3. A nice example is that you want to play every XX:25 a 90's hit. To do this, you can add some songs from the songs database as "90's Top Hits" properties. Also, you could select a category for much bigger variety. Of course, to complete this special clock it would be nice a special jingle category or an event as opening, like the example below.

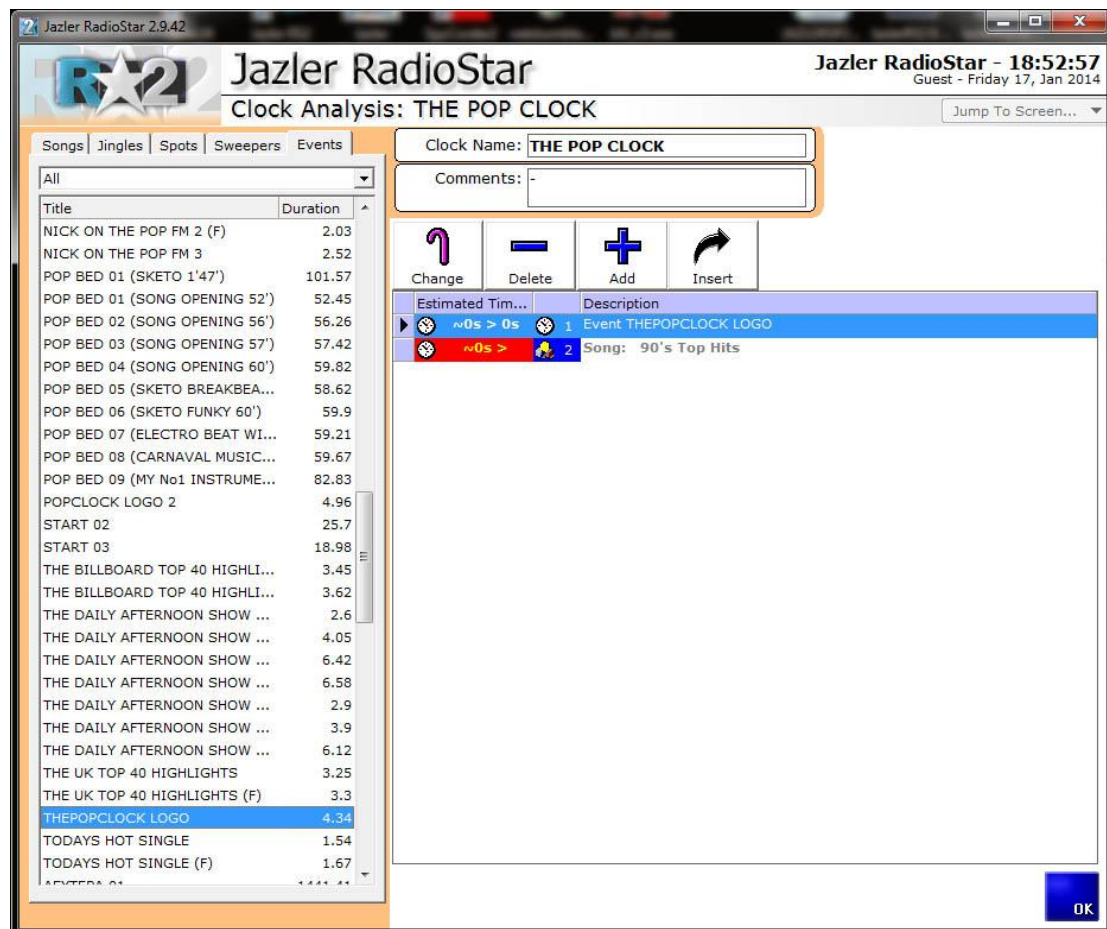


Figure 4-1

From the Control Panel, press Force Clocks Scheduler.

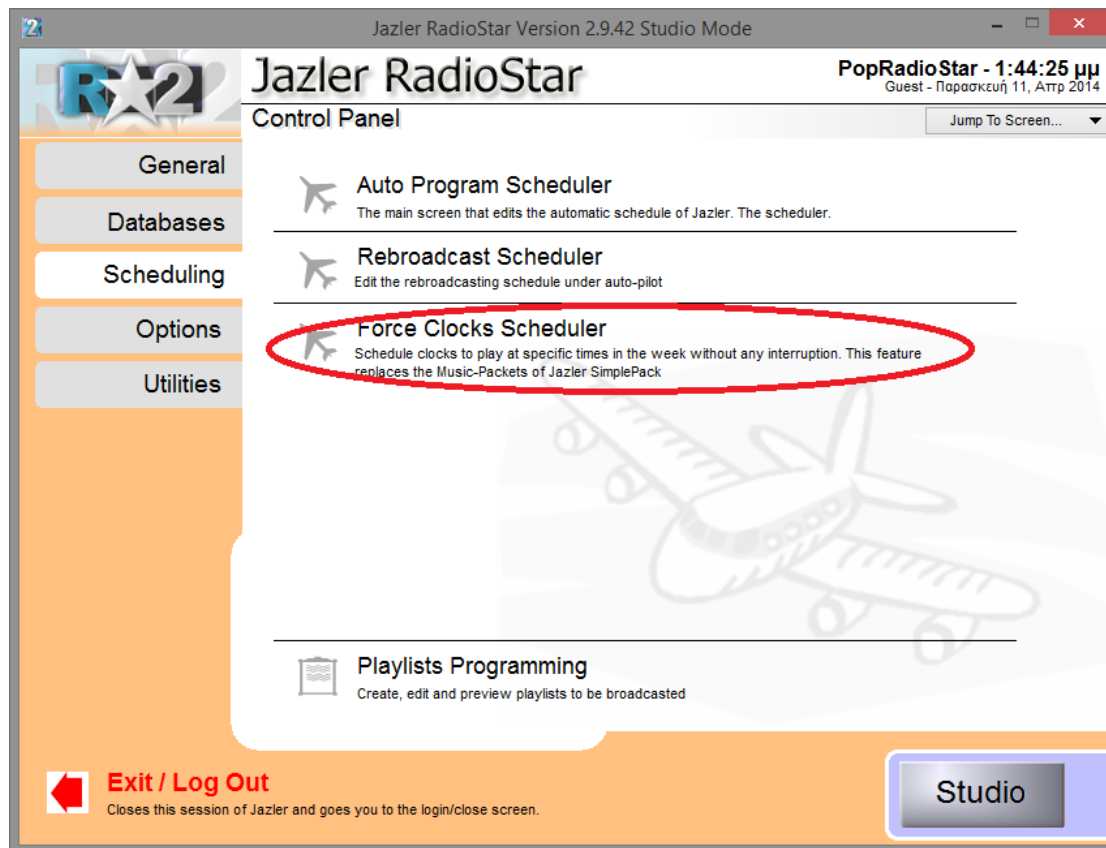


Figure 4-2

In order to add a new Force Clock press “**Add**”.

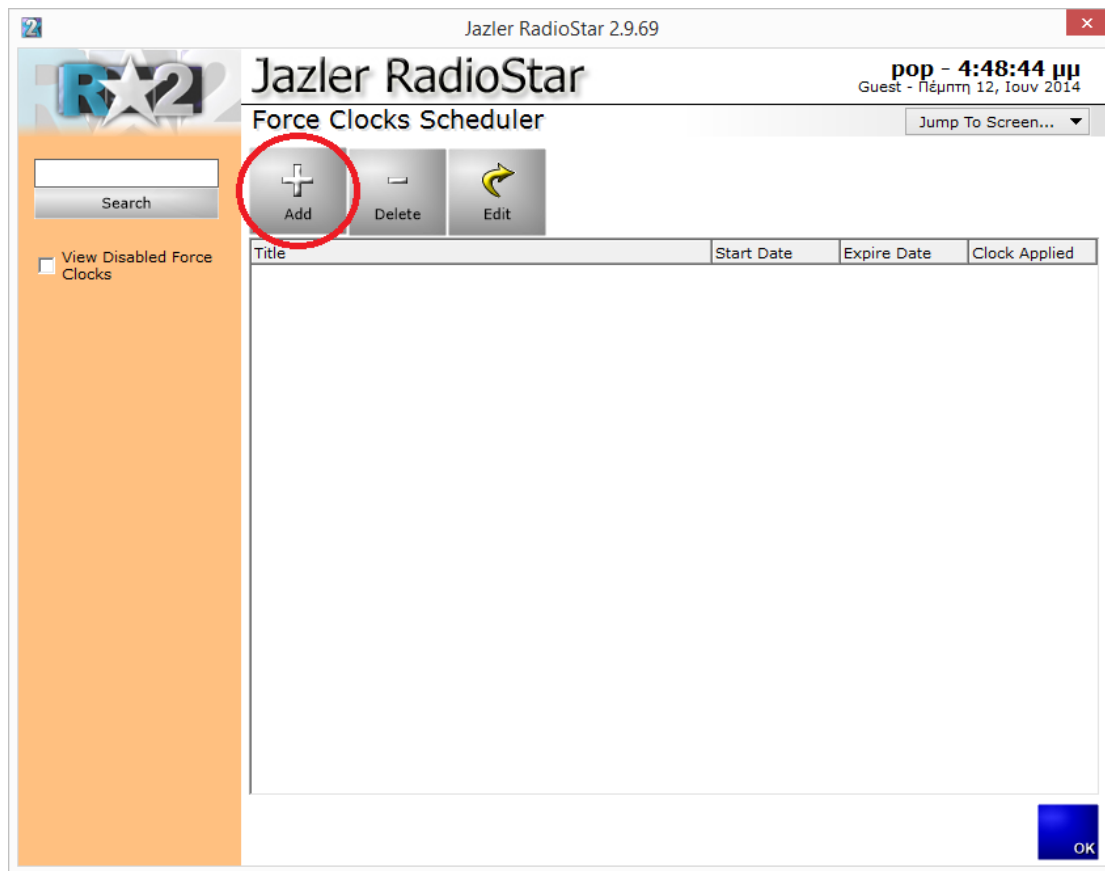


Figure 4-3

As you see below this is Jazler's Force Clock Analysis.

Jazler RadioStar 2.9.42

### Jazler Force Clock Analysis

Title: THE POP CLOCK :25 ☒ Enabled

Applied Clock: THE POP CLOCK

Comments:

Start Date: 13/1/2011 00:00 ... Expire Date: Never ...

Presets

Save Delete

Apply

Scope of changes

☒ All Days  
☐ Selected Day

Priority 5

After Break

Time: \_:\_

Copy Selected Day To All Days

Add Delete Clear All

OK X

Mon	Tue	Wed	Thu	Fri	Sat	Sun
00:25>5	00:25>5	00:25>5	00:25>5	00:25>5	00:25>5	00:25>5

Figure 4-4

You can give a title to the force clock and some comments for detailed description. Select the POP CLOCK as the “Applied Clock” and set the start date. If you want the clock to be aired forever check Never as Expire Date. At first you have to select if you want the clock to be applied at all days or in a specific day. Then you choose the priority, the position, before or after the Break and the time. Let’s put at All days with priority 5 and after the break at 00:25 and press “**Add**”. Now all days have a force clock on 00:25 with priority 5 and it will be aired after the break.

Now we must repeat this procedure for every hour. (Figure 4-5)

When you are finished and have the complete schedule on every day, if you press “*Save*” below the Presets the whole schedule will be saved.

**Jazler Force Clock Analysis**

Title: THE POP CLOCK :25 ☒ Enabled

Applied Clock: THE POP CLOCK

Comments:

Start Date: 20/1/2014 00:00 ... Expire Date: Never ...

**Presets**

every hour :25

**Broadcast Schedule**

Mon	Tue	Wed	Thu	Fri	Sat	Sun
10:25>5	10:25>5	10:25>5	10:25>5	10:25>5	10:25>5	10:25>5
11:25>5	11:25>5	11:25>5	11:25>5	11:25>5	11:25>5	11:25>5
12:25>5	12:25>5	12:25>5	12:25>5	12:25>5	12:25>5	12:25>5
13:25>5	13:25>5	13:25>5	13:25>5	13:25>5	13:25>5	13:25>5
14:25>5	14:25>5	14:25>5	14:25>5	14:25>5	14:25>5	14:25>5
15:25>5	15:25>5	15:25>5	15:25>5	15:25>5	15:25>5	15:25>5
16:25>5	16:25>5	16:25>5	16:25>5	16:25>5	16:25>5	16:25>5
17:25>5	17:25>5	17:25>5	17:25>5	17:25>5	17:25>5	17:25>5
18:25>5	18:25>5	18:25>5	18:25>5	18:25>5	18:25>5	18:25>5
19:25>5	19:25>5	19:25>5	19:25>5	19:25>5	19:25>5	19:25>5
20:25>5	20:25>5	20:25>5	20:25>5	20:25>5	20:25>5	20:25>5
21:25>5	21:25>5	21:25>5	21:25>5	21:25>5	21:25>5	21:25>5
22:25>5	22:25>5	22:25>5	22:25>5	22:25>5	22:25>5	22:25>5
23:25>5	23:25>5	23:25>5	23:25>5	23:25>5	23:25>5	23:25>5

**Scope of changes**

Priority 5

After Break

Time: .:

**Buttons:** Save, Delete, Apply, Copy Selected Day To All Days, Add, Delete, Clear All, OK, X

Figure 4-5